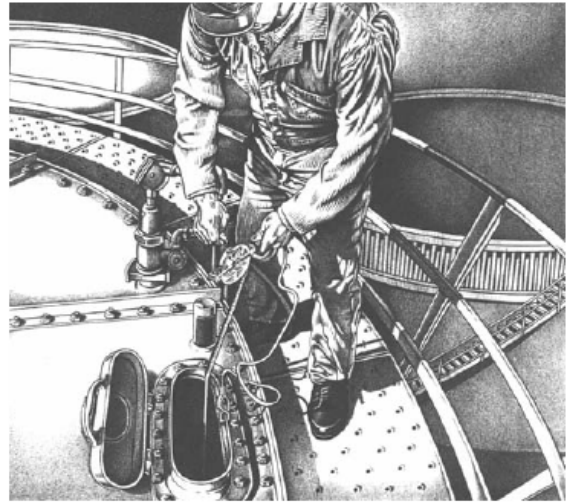


Oil Gauging

- Chrome Clad® for dark (heavy oils)
- Nubian® for light (clear oils)
- “Double Duty” oil gauging tapes with both Chrome Clad® and Nubian® (black) for dark (heavy) and light (clear) oils
- Made of heavy gauge 1/2" (13mm) x .012" (0.3mm) steel
- Snap-swivel hook on front end of tape for a plumb bob
- Two arm reels for short lengths; four arm reels for 30m/100' lengths
- Large drums and winding handles for quick and easy rewinding
- Handle folds over for storage and to lock line at extended position

Plumb Bobs are not supplied with tapes. The last part of the catalog number denotes the style of the bob the tape is made to accept. Lufkin Oil Gauging Tapes and Plumb Bobs are manufactured to comply with American Petroleum Institute (API) Standard 2545 and American Society for Testing & Materials (ASTM) Standard D 1085. These standards are the same and refer to the method of Gauging Petroleum and Petroleum Products.

1. Never gauge a tank during an electrical storm.
2. Ground yourself and your tools by touching the tank ladder before climbing the ladder. Do not wear gloves when grounding yourself. Gloves prevent proper grounding.
3. Ground yourself before opening the gauging hatch by touching the handrail or platform (without gloves on). During and after removal of the gauging cover, stand so that the gas will not be inhaled. Wear a gas mask if toxic gases are present.
4. Always maintain contact between the gauging tape and the edge of the hatch from the moment the gauge bob enters the hatch until the gauge bob is removed from the hatch.



Atlas® Chrome Clad® / Nubian® Double Duty

- Black markings bonded to steel and recessed beneath multiple layers of nickel and chrome electroplating provides greater resistance to wear and corrosion
- All tapes read right to left
- Heavy-duty frame designed for years of rugged use
- All frames include a grounding strap
- Plumb bob must be ordered separately



Lufkin

Cat. No.	Bob Cut	UPC No.	Packed	Blade Size		Blade Style	Pack Wt.		Shelf Pack	Replacement Blade	UPC No.
				Width	Length		lb	kg			
CN129012SF590	590	037103459527	Boxed	1/2'	18'	D1	1.25	.57	1	OCN129012SF590	037103459633
CN1290SF590	590	037103459534	Boxed	1/2'	25'	D1	1.51	.68	1	OCN1290SF590	037103459640
CN1290SMEF590	590	037103001696	Boxed	1/2'(13mm)	25'(8m)	D3	1.51	.68	1	-	-
CN1291SF590	590	037103459541	Boxed	1/2'	33'	D1	1.65	.75	1	OCN1291SF590	037103459657
CN1293SF58712	5871/2	037103459763	Boxed	1/2'	50'	D1	2.07	.94	1	-	-
CN1293SF590	590	037103459558	Boxed	1/2'	50'	D1	2.07	.94	1	OCN1293SF590	037103459664
CN1293SDF590	590	037103459596	Boxed	1/2'	50'	D2	2.07	.94	1	-	-
CN1293SMEF590	590	37103459602	Boxed	1/2'(13mm)	50'(15m)	D3	2.07	.94	1	OCN1293SMEF590	037103459718
CN1294SF58712	5871/2	037103459770	Boxed	1/2'	66'	D1	2.38	1.08	1	-	-
CN1294SF590	590	037103459565	Boxed	1/2'	66'	D1	2.38	1.08	1	OCN1294SF590	037103459671
CN1294SMEF590	590	037103459619	Boxed	1/2'(13mm)	66'(20m)	D3	2.38	1.08	1	OCN1294SMEF590	037103459725
CN1295SF590	590	037103459572	Boxed	1/2'	75'	D1	2.57	1.17	1	OCN1295SF590	037103459688
CN1295SMEF58712	5871/2	037103440815	Boxed	1/2'(13mm)	75'(23m)	D3	2.57	1.17	1	-	-
CN1295SMEF590	590	037103122124	Boxed	1/2'(13mm)	75'(23m)	D3	2.88	1.31	1	OCN1295SME590	037103122117
CN1296SF590	590	037103459589	Boxed	1/2'	100'	D1	3.4	1.54	1	OCN1296SF590	037103459695
CN1296SMEF590	590	037103459626	Boxed	1/2'(13mm)	100'(30m)	D3	3.46	1.57	1	OCN1296SMEF590	037103459732
CN1298SMEF590	590	037103104243	Boxed	1/2'(13mm)	125'(38m)	D3	3.89	1.76	1	-	-

Atlas® Chrome Clad®



- Black markings bonded to steel and recessed beneath multiple layers of nickel and chrome electroplating provides greater resistance to wear and corrosion
- All tapes read right to left
- Heavy-duty frame designed for years of rugged use
- All frames include a grounding strap
- Plumb bob must be ordered separately

Cat. No.	Bob Cut	UPC No.	Packed	Blade Size		Blade Style	Pack Wt.		Shelf Pack	Replacement Blade	UPC No.
				Width	Length		lb	kg			
C12901/2SF590	590	037103454065	Boxed	1/2"	18'	D4	1.35	.61	1	OC12901 / 2SF590	037103454072
C1290SF590	590	037103454102	Boxed	1/2"	25'	D4	1.51	.68	1	OC1290SF590	037103454119
C1291SF590	590	037103454140	Boxed	1/2"	33'	D4	1.65	.75	1	OC1291SF590	037103454157
C1293SF590	590	037103454256	Boxed	1/2"	50'	D4	2.07	.94	1	OC1293SF590	037103454263
C2910MME590GM	590GM	037103063373	Boxed	1/2" (13mm)	33' (10m)	D6	1.65	.75	1	OC2910MME590GM	037103046772
C2915MME590GM	590GM	037103091406	Boxed	1/2" (13mm)	50' (15m)	D6	2.07	.94	1	-	-
C2920MME590GM	590GM	037103003386	Boxed	1/2" (13mm)	66' (20m)	D6	2.38	1.08	1	-	-
C2930MME590GM	590GM	037103089236	Boxed	1/2" (13mm)	100' (30m)	D6	3.45	1.56	1	-	-
C2920MME150MM	150MM	037103047168	Boxed	1/2" (13mm)	66' (20m)	D6	2.38	1.08	1	-	-

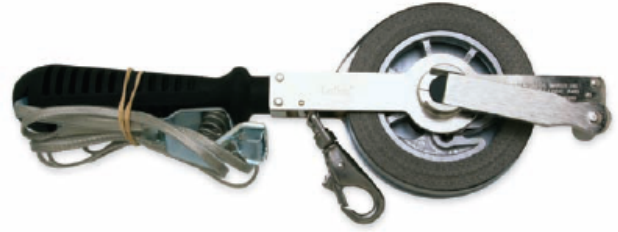
Atlas® Nubian®



- Ideal for gauging clear oils
- Etched background
- Blade protected by flowed-on epoxy coating
- Raised bright steel markings are clearly legible
- All tapes read right to left
- Heavy-duty frame designed for years of rugged use
- All frames include a grounding strap
- Plumb bob must be ordered separately

Cat. No.	Bob Cut	UPC No.	Packed	Blade Size		Blade Style	Pack Wt.		Shelf Pack	Replacement Blade	UPC No.
				Width	Length		lb	kg			
1290SF590	590	037103454089	Boxed	1/2"	25'	D5	1.51	.68	1	01290SF590	037103454096
1291SM590	590	037103441669	Boxed	(13mm)	(10m)	D7	1.65	.75	1	-	-
1293SF590	590	037103454201	Boxed	1/2"	50'	D5	2.07	.94	1	01293SF590	037103454218
1293SM590	590	037103441676	Boxed	(13mm)	(15m)	D7	2.07	.94	1	-	-

- Designed for use in highly corrosive solutions
- Stainless steel blade resists corrosion
- Heavy-duty frame designed for years of rugged use
- All frames include a grounding strap
- Plumb bob must be ordered separately



Cat. No.	Bob Cut	UPC No.	Packed	Blade Size		Blade Style	Pack Wt.		Shelf Pack	Replacement Blade	UPC No.
				Width	Length		lb	kg			
S1291F590	590	037103440839	Boxed	1/2"	33'	D4	1.65	.75	1	OS1291F590	037103440846
S1293F590	590	037103456823	Boxed	1/2"	50'	D4	1.73	.78	1	OS1293F590	037103454287

D1 Chrome Clad® and Nubian®

- 1/2" width only
- Markings one side only
- Graduated instantaneous feet and inches to 1/8ths



D2 Chrome Clad® and Nubian®

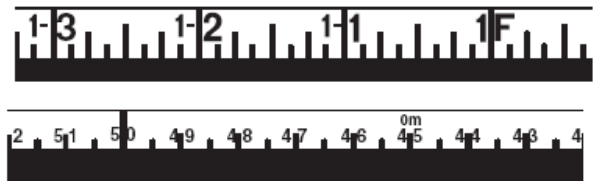
- 1/2" width only
- Markings one side only
- Graduated in feet to 1/10ths and 1/100ths of an inch; reads right to left



Lufkin

D3 Chrome Clad® and Nubian®

- 1/2"/13mm width only
- Markings both sides
- Graduated in millimeters on one side; other side instantaneous feet and inches to 1/8ths



D4 Chrome Clad®, and Stainless Steel



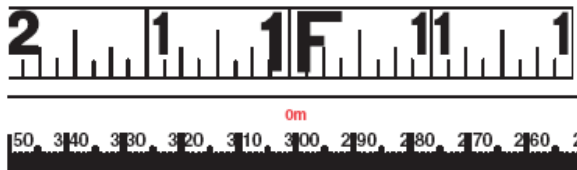
- 1/2" width only
- Markings one side only
- Graduated feet and inches to 1/8ths; instantaneous foot readings

D5 Nubian®



- 1/2" width only
- Nubian® blade
- Markings one side only
- Graduated feet and inches to 1/8ths; instantaneous foot readings

D6 Chrome Clad®



- 1/2"/13mm width
- Chrome Clad® blade
- Black and red markings on metric side
- Metric - graduated meters to millimeters; numbered right to left in meters and millimeters
- English side - graduated feet and inches to 1/8ths; numbered right to left

D7 Nubian®



- 1/2" width only
- Nubian® blade
- Graduated in meters; numbered in millimeters

Oil Gauging



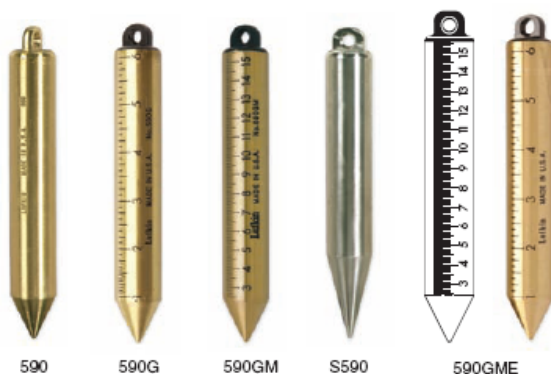
It takes more than a quality gauging tape, it takes a smart user. Every time you use a Lufkin oil gauging tape, follow proper grounding techniques. Ground your body. Ground your gear. And always use a grounding strap. Lufkin oil gauging tapes come complete with a grounding strap and an ESD handle, and are in full compliance with all current and proposed American Petroleum Institute standards. Achieve a solid ground every time. Use Lufkin oil gauging tapes, and follow proper grounding procedures.

How to Measure an Inage Plumb Bob

Tapes cut and fitted with the swivel snap to be used with the 588 and 590 plumb-bobs are known as inage gauging tapes. When the plumb bobs are assembled to the swivel snap the zero point is at the bottom of the plumb bob. When being used, the plumb bob and tape are lowered until the bob contacts the bottom of the tank. When the tape is reeled in, the liquid line is read on the tape line itself, thereby showing you the contents of the tank.

Inage Oil Gauging Plumb Bobs

- For use in heavy oils
- 20-ounce, except for 588 (6oz.)
- Cylindrical shaped
- Tapered point tip
- Solid brass or stainless steel bob



Cat. No.	UPC No.	Description	Shelf Pack
590	037103453204	20oz. solid brass inage Plumb bob cylindrical shape, 1" x 6 3/4"	1
590G	037103453235	20oz. solid brass bob; graduated in inches to 1/8ths, reading upward; blunt point	1
590GM	037103453242	20oz. solid brass bob; graduated millimeters with centimeters numbered	1
590GME	037103442895	20oz. solid brass bob; graduated in inches to 1/8ths, reading upward	1
S590	037103460134	20oz. cylindrical shape stainless steel bob, 1" x 6 3/4"	1

How To Measure With an Outage Plumb Bob

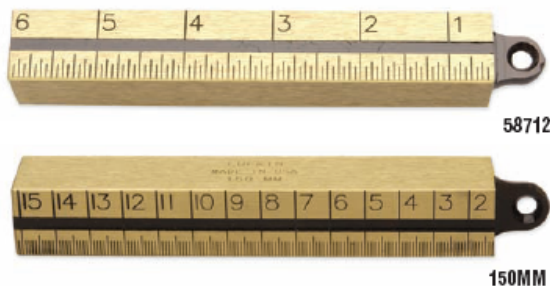
Tapes which have the swivel snap fitted so as to accommodate the 5871/2 plumb bob are known as outage tapes. When the 5871/2 plumb bob is assembled to the tape line the zero point is at the intersection of the swivel snap and the plumb bob. When using outage gauging tapes the tape is lowered into the tank until the plumb bob just penetrates the liquid. The tape is then rewound and the liquid level is read right off the plumb bob. The reading on the plumb bob is added to the tape reading giving the total outage (how much liquid has been removed from the tank).



Lufkin

Outage Oil Gauging Plumb Bob

- 15oz., square shaped solid brass bob
- Eye milled from solid brass block (not removable)
- 3/4" x 19mm square, 6" / 152mm overall length
- Graduated in inches to 1/16ths, or metric top to bottom, zero falls inside top of hook eye



Cat. No.	UPC No.	Description	Shelf Pack
58712	037103453181	15oz. solid brass outage plumb bob	12
150MM	037103105875	540g. brass outage plumb bob	12