



Cable routes without secrets thanks to LKZ-1500

Product characteristics

The LKZ-1500 locator set, consisting of a transmitter and receiver, allows for location, identification and tracking of the route of objects buried in the earth, i.e.:

- power cords and cables, control cables, telecommunications cables,
- underground elements of lightning protection systems, cathodic protection systems,
- water and sewage systems,
- fuel transmission systems (pipelines, gas pipelines)
- heating systems and pre-insulated pipes.

The locator is intended for electrical power and fitting companies, companies that perform earthworks, construction, railway engineering, refineries, water mains and sanitary systems, heating companies and geodetic companies.



Transmitter

- Transmitter power: max. 10 W (available: 1 W, 2 W, 5 W, 10 W)
- Direct, inductive clamp (N-1, N-4, N-5) or internal transmitter antenna coupling,
- Continuous or interval mode of operation that extends battery life (12 V / 7 Ah battery),
- Case housing, segment display,
- Operating temperature range from -20°C up to +55°C
- Dimensions: 275 x 250 x 180 mm

Receiver

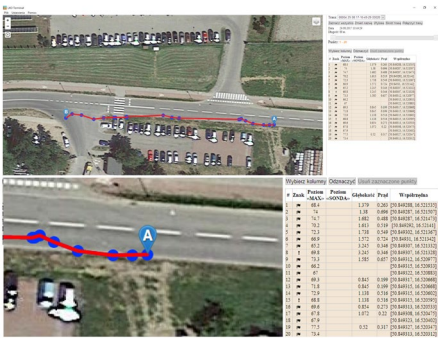
- Operating in a wide frequency range - passive mode (50...60 Hz, 100 Hz, 300 Hz, 550 Hz, 1450 Hz):
 - » power (50 Hz)
 - » ether (48 Hz...14 kHz)
 - » radio (10...36 kHz)
- Active mode: 273 Hz, 526 Hz, 1024 Hz, 8928 Hz, 33 kHz
- Cable earth fault detection (frame A or DKI probe),
- Power supply from removable battery (5x LR6 AA),
- Graphic display of the position, depth of the object and direction of current
- Location depth up to 6 m
- Dimensions: 700 x 300 x 140 mm
- Operating temperature range from -20°C a +55°C



Locator functions

- Determine the direction of cable placement, position of the cable relative to the receiver axis (has a compass function).
- Determine the current and residual depth of the cable, both in active mode (with transmitter) and in passive mode (without transmitter).
- Save the route of placing an object on the map. Memory up to 10,000 coordinates.
- Possibility of finding damaged cable locations.

The device, with any GPS module and dedicated program (**LKZ Terminal**), that is provided with the set, will allow you to plot the route of the underground object and mark the location of single measurement positions on the map. Communication of the LKZ with GPS module is through the Bluetooth.



Sonel LKZ Terminal

LKZ Terminal is a dedicated program for handling data stored in LK0-1500. It allows you to map a route from your location and read the data stored in the receiver. The data includes:

- coordinates of the place of measurement according to GPS information,
 - reading the depth of the object and value of current flowing in it,
 - the direction of the forced current,
 - operating frequency,
 - date and local time at the time of measurement according to GPS information.
- Recommended GPS module: RCV 3000.

Standard accessories



LKN-1500 cable locator - transmitter

WMXXLKN1500



LKO-1500 cable locator - receiver

WMXXLKO1500



Sun-protecting cover

WAPOZSL4



Crocodile clip 1 kV 20 A red / blue

WAKRORE20K02
WAKROBU20K02



Test lead 5 m 1 kV (banana plugs) red / blue

WAPRZ005REBB
WAPRZ005BUBB



Power supply

Battery compartment
WAPOJ3



Rechargeable battery NiMH 6 V, 2 Ah
WAAKU23



Battery charger Z16 (transmitter)
WAZASZ16



Battery charger Z17 (receiver)
WAZASZ17



Ground probe 23 cm

WASONG23



Bag L13

WAFUTL13

Additional accessories



Transmitting clamps

N-1 (fi 52 mm)
WACEGN1BB

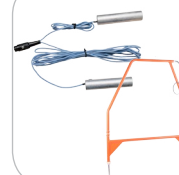
N-4 (fi 110 mm)
WACEGN4

N-5 (fi 125 mm)
WACEGN5



GPS adapter RCV-3000

WAADARCV300



Probes

DKI probe
WASONDKI

Adapter - A frame
WAADALKZRA2