

SLB-Series DC Load Banks (10-576V, 0-1200A)

SLB-SERIES

SMART DC Load Banks



SLB-Series DC Load Bank

Product Overview

Eagle Eye's SLB-Series DC load banks are designed for user ease of use, portability, and versatility in mind. Discharge testing batteries is the only verifiable method the capacity of your batteries and the SLB delivers a programmable, constant current load for your testing needs. Whether you are load testing for capacity, performance, acceptance, NERC compliance, or other, the SLB provides an economical complete package solution. Increase employee and battery system safety with PER CELL monitoring and standard built in auto-shutdown features. To suit a variety of industries and diverse applications, Eagle Eye offers over 75 standard models to fit your exact needs at the best price.

Product Features

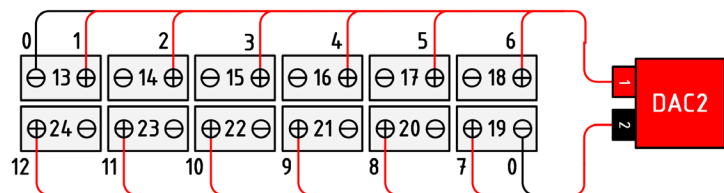
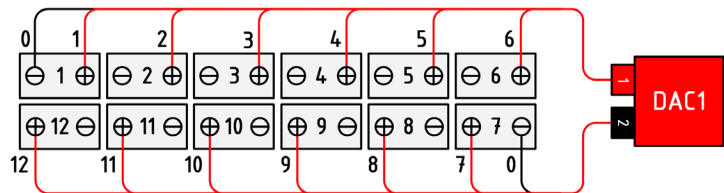
- Safely monitor live tests remotely with wireless communication to the SLB load bank
- DataView software includes live monitoring, data recording, and report exporting to Microsoft Excel
- Discharge auto-shutdown for time duration, total string voltage, capacity, and individual cell voltage
- Parallel with another SLB-Series unit for increased discharge current capacity
- Assistant discharge feature allows for compatibility with existing non-SLB load banks
- Increase current and add individual cell monitoring to your existing equipment with SLB-Series
- Built-in circuit breakers for emergency shutdown and overload protection
- **Optional:** Real-time display of voltage for each cell/unit with DAC package for 1.2V, 2V, 6V, 12V cells
- **Optional:** Custom DAC packages available for monitoring of uncommon cell voltages and configurations

Data Acquisition Case (DAC):

Eagle Eye's SLB-Series Load Banks come with an optional DAC package allowing the voltage of EACH CELL to be wirelessly monitored and recorded during discharge. The DAC package allows the user to evaluate the health of each cell and replace only the cells that require replacement - saving time and money by significantly reducing labor hours and replacement costs.

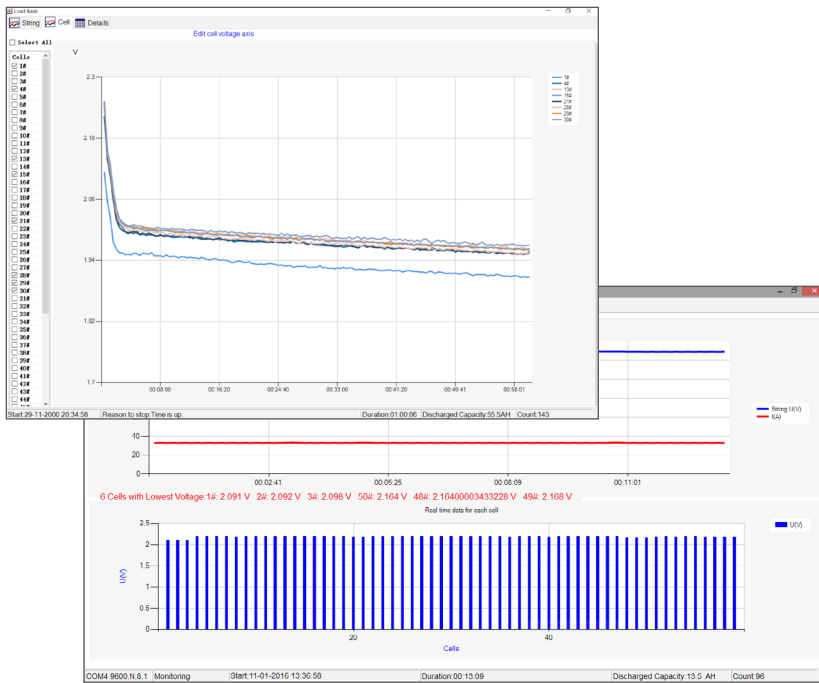


Data Acquisition Case (DAC)



DAC Connection to 48V Battery (2V) Cells

Typical connection of DAC's to the battery cells include a test lead connected to each cell from the DAC. Each DAC can connect up to 12 cells. DAC's are expandable to any size battery system and are compatible with VRLA, VLA, NiCad, and other battery types.



Real-Time Data Logging of Cell Voltage

Discharge DataView Software

The included DataView software allows the user to monitor the discharge test in real-time or import and view tested data from the load bank with the provided USB drive. View and print a detailed histogram of each cell's voltage at any point during the discharge test at user defined intervals of 15, 30, or 60 minutes.

Recorded data exports directly to Microsoft Excel. Users are able to customize the report with company name and location as well as input battery information including battery make, cell type, rated capacity, and more. The complete test criteria, weakest cells, string information, and individual cell information are included in the report. Graphs for string, and cells are also available to view in the software.

Technical Specifications

Cell Voltage:	Standard DAC: 1.2V ₁ , 2V, 6V, 12V / Optional 3.6V, 4V, and other custom DAC configurations available upon request
Discharge Current Range:	Single Load: 12 – 600A / Parallel Load: Up to 1200A
Discharge Voltage Range:	Range: 10 – 576V (Max) / Voltage Steps: 12V, 24V, 36V, 48V, 80V, 125V, 240V, 380V, 480V
Accuracy:	Discharge Current: 1% / Voltage: 0.5% – 0.8%
Resolution:	Discharge Current: 0.1 A or 0.5% / Voltage: 0.001 V
Sampling Interval:	5 seconds – 1 minute
Data Transfer:	USB, Wireless (466 MHz)
Display:	Backlit LCD
Operating Environment:	0 – 40 °C (32 – 104 °F)
Power Requirements:	110/220 VAC 50/60 Hz / DC (from connected batteries)
Dimensions:	Small: 400 x 177 x 288 mm (15.7 x 7 x 11.3 in) Medium: 520 x 202 x 355 mm (20.5 x 8 x 14 in) Large: 555 x 225 x 435 mm (22.5 x 8.9 x 17.2 in) X-Large: 603 x 400 x 740 mm (23.7 x 15.7 x 29 in) XX-Large: 762 x 406 x 737 mm (30 x 16 x 29 in)
Weight:	Small: 11 kg (24 lbs) Medium: 16 kg (36 lbs) Large: 21 kg (47 lbs) X-Large: 42 kg (93 lbs) XX-Large: 55 kg (122 lbs)

(1)The standard DAC package includes quantity of DAC's & cabling for 2V/6V/12V batteries; testing of 1.2V NiCad batteries require additional DAC & cabling. Please make sure to note testing of NiCad to your sales rep.

Kit Includes

- SLB-Series Load Bank
- DataView Management Software
- Carrying Case (for small & medium size models)
- Set of 3m/10ft Load Cables
- 3m/10ft Voltage Test Leads
- PC communication interface
- Ground Cable
- AC Power Cord
- USB Drive with Software/ User Manual
- (2) Antenna
- **Optional:** Standard DAC Package
- **Optional:** CT Clamp for Assisted or External Load Testing
- **Optional:** Parallel Load Cable

Ordering Information

No.	Model #	Description
1	SLB-Series*	SMART Constant Current DC Load Bank with Monitoring (12-480V, 100-600A) *See next page for listing of model numbers *Add "DAC" after model number for wireless monitoring per cell



To Order Call Toll Free:
1-877-805-3377

SLB-Series Standard Models

**Custom models available upon request*

SMART DC Load Banks **SLB-SERIES**

No	Model	Maximum Discharge Current At:									
		12VDC	24VDC	28VDC	36VDC	48VDC	80VDC	125VDC	240VDC	380VDC	480VDC
1	SLB-12/24-400	400	400	--	--	--	--	--	--	--	--
2	SLB-24-300	--	300	--	--	--	--	--	--	--	--
3	SLB-24-400	200	400	--	--	--	--	--	--	--	--
4	SLB-24-500	250	500	--	--	--	--	--	--	--	--
5	SLB-24/36-100	50	100	77.7	100	--	--	--	--	--	--
6	SLB-24/36-300	150	300	233.3	300	--	--	--	--	--	--
7	SLB-24/36/48-300	150	300	233.3	300	300	--	--	--	--	--
8	SLB-24/36/48/80-200	--	200	--	200	200	200	--	--	--	--
9	SLB-24/48-200	--	200	--	--	200	--	--	--	--	--
10	SLB-24/48-300	150	300	175	225	300	--	--	--	--	--
11	SLB-24/48-300/600	150	300	350	450	600	--	--	--	--	--
12	SLB-24/48-600	300	600	350	450	600	--	--	--	--	--
13	SLB-28-100	40	80	100	--	--	--	--	--	--	--
14	SLB-28-150	60	120	150	--	--	--	--	--	--	--
15	SLB-28-300	120	240	300	--	--	--	--	--	--	--
16	SLB-28-500	200	400	500	--	--	--	--	--	--	--
17	SLB-48-150	--	--	--	--	150	--	--	--	--	--
18	SLB-48-300	75	150	175	225	300	--	--	--	--	--
19	SLB-48-400	--	--	--	--	400	--	--	--	--	--
20	SLB-48-500	125	250	290	375	500	--	--	--	--	--
21	SLB-48/125-100	25	50	58	75	100	64	100	--	--	--
22	SLB-48/125-200	50	100	116	150	200	128	200	--	--	--
23	SLB-48/125-300	75	150	174	225	300	192	300	--	--	--
24	SLB-48/240-100	25	50	58	75	100	33	52	100	--	--
25	SLB-10-288v-200A	50	100	116	150	200	50	75	150	--	--
26	SLB-80-100	15	30	35	45	60	100	--	--	--	--
27	SLB-80-200	30	60	70	90	120	200	--	--	--	--
28	SLB-125-100	--	--	--	--	--	--	100	--	--	--
29	SLB-125-200	19	38	44	57	76	128	200	--	--	--
30	SLB-125-300	29	57	67	86	115	192	300	--	--	--
31	SLB-125-400	38	76	89	115	153	256	400	--	--	--
32	SLB-125-500	--	96	112	144	192	320	500	--	--	--
33	SLB-125/240-100	9.6	19	22	29	38	64	100	100	--	--
34	SLB-125/240-150	14	30	33.4	43	60	96	150	150	--	--
35	SLB-240-150	8	15	17.5	23	30	50	78	150	--	--
36	SLB-240-200	10	20	23	30	40	66	104	200	--	--
37	SLB-380-50	--	--	--	--	--	--	--	--	50	--
38	SLB-380-100	--	--	--	--	--	--	--	--	100	--
39	SLB-480-100	2.5	5	5.8	7.5	10	16.6	26	50	79	100